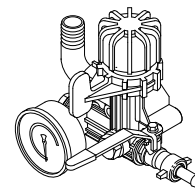
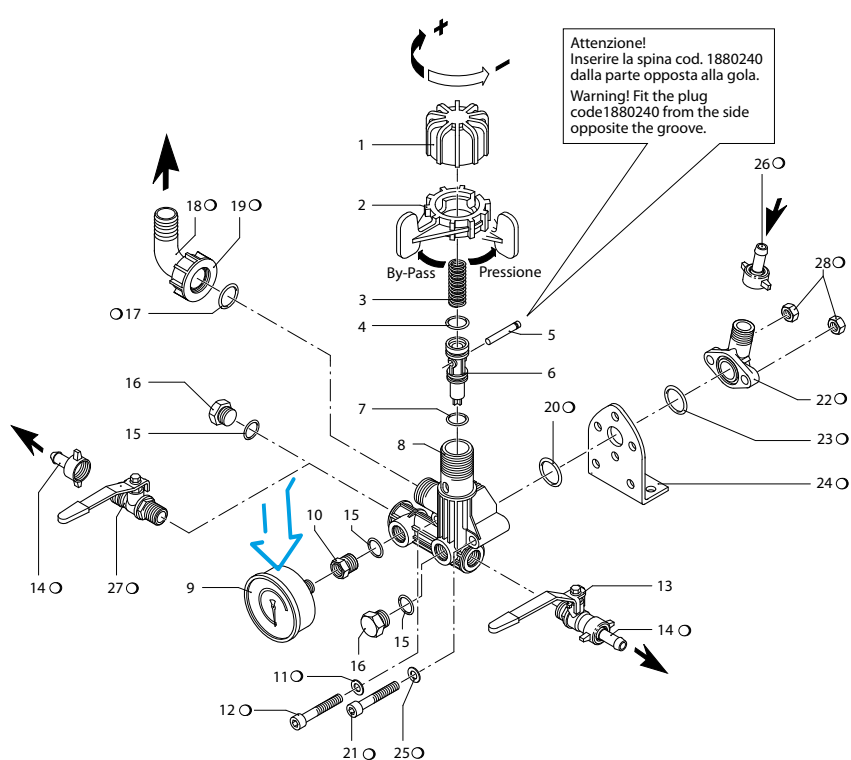


GR 30

		Kit I	Kit S
	1 via		+1 via
GR 30	879	891	892

188 Series

CM 1888640



105 - 1

SL000302-BU

Pos	Cod.	Descrizione	Description	Q.ty	Note
1	1880220	Manopola	Knob	1	
2	1880210	Ghiera	Ring nut	1	
3	1880331	Molla	Spring	1	☒
4	480441	Guarnizione OR	O-ring	1	Viton ☒
5	1880240	Spina	Pin	1	☒
6	1889206	Otturatore	Shutter	1	
7	1880260	Guarnizione OR	O-ring	1	☒
8	1880200	Corpo valvola	Valve body	1	
9	1880340	Manometro	Pressure gauge	1	0-50bar ⊕ C ₁₀
10	1880250	Raccordo	Fitting	1	⊕ C ₁₀
11	550331	Rondella	Washer	2	Z/B
12	801080	Vite	Screw	2	
13	1880491	Rubinetto	Valve	1	⊕ C ₁₀
14	110131	Girello	Ring nut	2	
15	740290	Guarnizione OR	O-ring	3	
16	2841240	Tappo	Plug	2	C ₁₀
17	880830	Guarnizione OR	O-ring	1	
18	550460	Curva	Elbow	1	
19	550450	Girello	Ring nut	1	
20	1140450	Guarnizione OR	O-ring	1	
21	1880310	Vite	Screw	2	
22	450145	Flangia	Flange	1	
23	550350	Guarnizione OR	O-ring	1	
24	320406	Staffa	Bracket	1	
25	390311	Rondella	Washer	2	
26	110130	Girello	Ring nut	1	
27	1880492	Rubinetto	Valve	1	⊕ C ₁₀
28	390270	Dado	Nut	2	

o Non compreso nel Cod. 879 - No part of code 879

sp_gr30.pdf

Kit per/for GR 30	
KIT 891 "I" 	KIT 892 "S"
UN000481-GE	UN000482-GE

Gruppi comando
Control units

Comando incorporato e separato - Build-in control unit and remote control

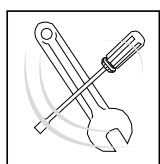
KIT 891 "I" Comando incorporato Build in control			
Pos.	Q.ty	Pos.	Q.ty
11	2	18	1
12	2	19	1
14	1	20	1
17	1		

Per / for AR 252

KIT 892 "S" Comando separato Remote control			
Pos.	Q.ty	Pos.	Q.ty
14	3	27	1
17	1	28	2
18	1		
19	1		
20	1		
21	2		
22	1		
23	1		
24	1		
25	2		
26	1		

Per / for AR 252

→
Posizione targa di
identificazione.
Pump and manufac-
turer identification.



KIT 2411 Pronto intervento Maintenance repair					
Pos.	Q.ty	Pos.	Q.ty	Pos.	Q.ty
1	1	6	1	19	1
2	1	7	1	20	1
3	1	15	3	23	1
4	1	17	1		
5	1	18	1		

(2062)

(CI 0446 MG 14.01.11)

(3023)

0435MG

DI 808567

MI 99406