

MMD-HY

MOTORE IDRAULICO / HYDRAULIC MOTOR



MMD-HY

MOTORE IDRAULICO / HYDRAULIC MOTOR

MASSIMA TEMPERATURA INGRESSO ACQUA
MAX INPUT WATER TEMPERATURE

65°C
149° F

PRESSIONE MINIMA INGRESSO
MINIMAL INPUT PRESSURE

0.2 BAR
2.9 PSI

INGRESSO
INLET

G 1/2"

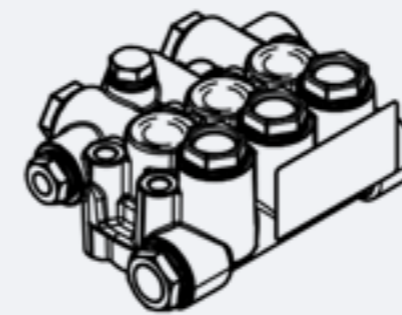
USCITA
OUTLET

G 3/8"



Codice Code	Modello Model	Portata / Flow Rate lt/min - gpm		Pressione / Pressure Bar Psi		Potenza / Power HP Kw		Albero / Shaft
		1450 rpm		Bar	Psi	HP	Kw	SAE A Cilindrico Ø 15.9mm / 0.626"
P3.020.201	MMD12250R-HY	12.00	3.17	250.00	3625	9.35	6.98	Destra / Right
P3.020.202	MMD15250R-HY	15.00	3.96	250.00	3625	11.69	8.72	Destra / Right
P3.020.203	MMD18250R-HY	18.00	4.75	250.00	3625	14.03	10.47	Destra / Right
P3.020.204	MMD21250R-HY	21.00	5.55	250.00	3625	16.36	12.21	Destra / Right
P3.020.205	MMD12250L-HY	12.00	3.17	250.00	3625	9.35	6.98	Sinistra / Left
P3.020.206	MMD15250L-HY	15.00	3.96	250.00	3625	11.69	8.72	Sinistra / Left
P3.020.207	MMD18250L-HY	18.00	4.75	250.00	3625	14.03	10.47	Sinistra / Left
P3.020.208	MMD21250L-HY	21.00	5.55	250.00	3625	16.36	12.21	Sinistra / Left

RICAMBI / SPARE PARTS



KIT - P9.040.017

TESTATA COMPLETA
COMPLETE HEAD OF THE PUMP



KIT - P9.039.001

ANELLI TENUTA OLIO ASTA
KIT OIL SEAL PUMP MM PM



KIT - P9.003.025

GUARNIZIONE PISTONE
KIT PLUNGER SEALS



KIT - P9.004.013

PISTONE DIAMETRO 20
KIT CERAMIC PISTON - DIAMETER 20



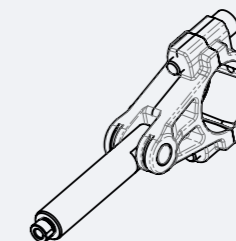
KIT - P9.001.005

VALVOLA COMPLETA
COMPLETE VALVE



KIT - P9.003.026

GUARNIZIONE PISTONE - PACCO COMPLETO
KIT COMPLETE SEALS



KIT - P9.041.004

PREMONTATO BIELLA - ASTA
PREASSEMBLED CONNECTING ROD

MMD-HY	PORTATA FLOW RATE		GIRI ROUNDS	PRESSIONE MASSIMA MAX PRESSURE		CAPACITÀ OLIO OIL CAPACITY		PESO WEIGHT	
	Lt/min	Gpm	Rpm	Bar	Psi	Lt	Gal	Kg	Lbs
	12.00 » 21.00	3.17 » 5.55	1450	250	3625	0.7	0.18	11.4	25.1